



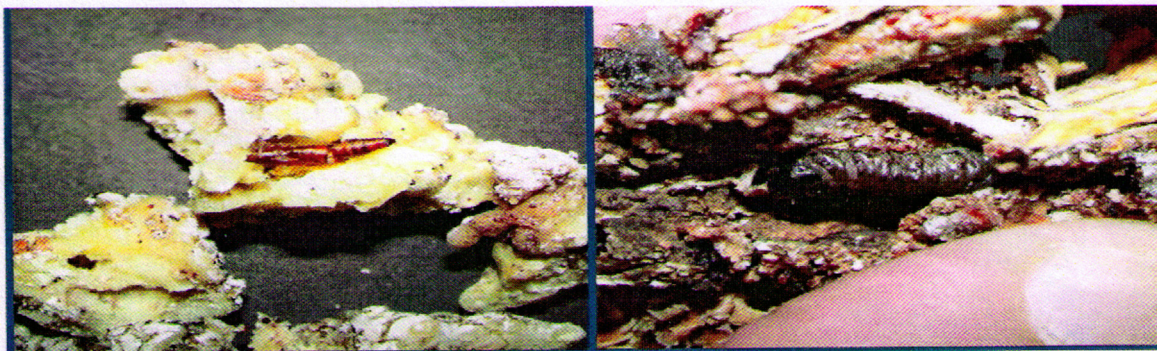
Full Service
Tree Care Company

CAPITAL CITY TREE EXPERTS

608.838.8522 info@CAPCITYTREE.COM

What is Zimmerman Pine Moth?

Zimmerman Pine Moth (*Dioryctria zimmermani*) was first detected in the US in 1879. Austrian and Scots pines are preferred hosts of Zimmerman Pine Moth. However Eastern White and Mugo Pines are also attacked.



Zimmerman pine moth pupa (left) and larva (right) embedded in masses of pine pitch.

How do you control Zimmerman Pine Moth?

Avoid plant injury (e.g., construction injury) and environmental stresses (e.g., drought stress) that can make trees attractive to Zimmerman pine moth adults. Applicants must be made in the spring, before larvae migrate into tree trunks. Preventive insecticide sprays should be applied as a drenching spray to trunks in mid to late April. Sprays are also made in early September to kill small larvae.

Zimmerman Pine Moth

Additional Notes: _____

Date: _____ Price: _____ Salesman: _____